

## What will Grace Church look like in the year 2013?



- 5 weekend services on campus
- 2 satellite services each weekend at off-campus sites
- 3000 for an average weekend attendance between these 7 services
- 1500 adults actively involved in Connect Groups
- 10 church-sponsored short-term mission trips
- 2 individuals/couples sent out from Grace Church into fulltime international Christian service supported by Grace Church at 50% of their need
- A staff of 40 on the church payroll
- Completed renovation of our current lobby including additional office space, restrooms, and a large coffee café
- Completed renovation of the Young Chapel and children's wing into a state-of-the-art facility for children's ministry
- Additional Parking

### **Matt McElravy** – Worship Arts Director

I have never been a part of something like what is going on at Grace Church before, and I am blessed to be able to get up every morning and look forward to coming to work, knowing that what we are doing is reaching people with the message of Jesus Christ every single day and transforming hearts and lives in our community for the Kingdom of God!

### **Steve Burghart** – Pastor of Connections

This is not a “safe” plan. This plan is not an appraisal of what we think we can achieve by the strength of our own hands, but a declaration in faith of what we believe God is calling us to accomplish by His power.

### **Tim Auld** – Executive Pastor

This vision plan is going to grow me (and the church family) spiritually as I (we) will need to depend upon God to see this vision come to fruition in the next five years. Because meeting and moving is our driving force, I cannot help but get excited about the potential of reaching 3000 - 5000 people on any given weekend through our multiple services and campuses with the life changing message of God's Word.

### **Doug Kegarise** – Director of Student Ministries

This new lobby and café area will be the perfect setting for our regular student ministry programming. This could not have come at a better time! As I have been praying about the next few years, I couldn't have even dreamed this plan up! It is amazing how God works.

### **Susan Auld** – Children's Ministry Director

I am excited about the priority that has been placed on the Children's Ministry. A renovation to our current children's wing will only help to enhance all our weekly programs and school functions. I'm excited to see that this is a priority as we continue to meet kids where they are and move them to where God wants them to be!

### **John Kegarise** – Elder Chairman

In what is perceived by many as a dismal political and changing time in our country, this is the perfect time to move ahead. This vision will give the opportunity to see God work in marvelous ways and be a source of joy and encouragement when most things today seem less than opportunistic.

### **A Note From Pastor Scott**

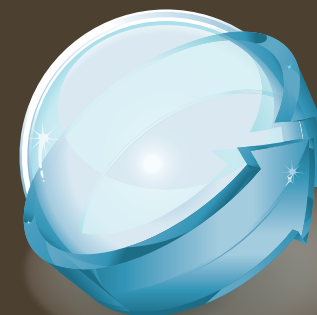
It is such a joy to be able to pastor Grace Church. From our strong historic roots to the many exciting ways that God is using our ministry today, Grace is a very special place. It is my prayer that we will never become idle in our purpose, which is to meet as many people as possible where they are and help move them to where God wants them to be. This 5-year vision plan will continue to move us that direction. It is my prayer that everyone who attends Grace will prayerfully and enthusiastically embrace this vision plan that we as staff and elders believe God has put in our hearts for this church.

Nothing of eternal importance ever happens apart from prayer!  
Please pray for this vision plan!

# 5 Year Vision Plan

## 2009 - 2013

Grace Church | Lititz, PA  
[www.lgbc.org](http://www.lgbc.org)



Behind every element of this plan is the following question:

**“How can we most effectively meet as many people as possible where they are and help move them to where God wants them to be?”**

## What are the 5 primary aspects of this vision plan?

**Multiple Weekend Services** – The hub of our ministry in meeting and moving people is our weekend services. Currently we have 3 Sunday morning worship services which reach an average of 1500 people each week. Our vision plan for the next 5 years calls for adding 2 Saturday night worship services that would be identical to the Sunday morning worship services, resulting in 5 worship services on campus every weekend.

**Satellite Campuses** – The 5-year vision plan includes starting 2 satellite campuses. Each campus would have live worship, children's ministry and a campus pastor. The message would be delivered via satellite or through tape delay from the main campus; therefore all sites would be hearing the same message each week.

**Small Groups** – In order for connectivity, fellowship and discipleship to take place, it is our desire to see 1500 people regularly involved in Connect Groups.

**Children / Youth / Education** – Children's, youth and education ministries will remain a priority through innovative programming and facility expansion.

**Missions** – Believing that the great commission involves meeting and moving as many people as possible all over the world, this 5-year vision plan calls for two mission's initiatives; the first being to see 2 church-sponsored, short-term mission trips each year. The second being at least 2 family units from Grace Church called to fulltime, international Christian service sponsored at 50% of their support need.

## How does this vision plan affect facility expansion?

This vision plan would put building a new auditorium/sanctuary on an indefinite hold. It is our belief that we will be able to meet and move far more people through multiple services on our main campus and at satellite locations.

Moving our athletic fields to the land across the street in order to build a new auditorium would be a multi-million dollar project. Renovating our current facility will be the most economical means for meeting the needs of our growing ministries.

## What facility expansion does this plan entail?

The first renovation is an update to our current foyer plus a 4800 square foot addition off of the sunroom. This addition will include more offices and restrooms, and a coffee café, equipped with large screen televisions and wireless internet access. A concessions area accessible to the sport's fields will benefit all outdoor activities.

The second renovation is an update to the existing Young Chapel and children's wing to a state-of-the-art facility for children's ministry. Over 20% of our Sunday morning attendance is 6th grade and under. This phase of renovation will allow us to more effectively meet as many children as possible and help move them to where God wants them to be.

## What are the yearly goals of this 5-year vision plan?

### 2009

---

Foyer Renovation/Expansion  
2 Church-Sponsored Mission Trips  
30 Additional Small Groups  
Additional Parking

### 2010

---

Children's Wing Renovation  
1st Saturday Service On Campus  
2 Church-Sponsored Mission Trips  
30 Additional Small Groups

### 2011

---

1st Satellite Campus  
2 Church-Sponsored Mission Trips  
30 Additional Small Groups

### 2012

---

2nd Saturday Service On Campus  
2 Church-Sponsored Mission Trips  
30 Additional Small Groups

### 2013

---

2nd Satellite Campus  
2 Church-Sponsored Mission Trips  
30 Additional Small Groups

Meeting and Moving as many as possible